

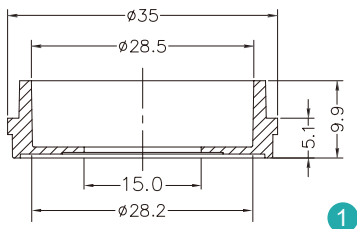
Glass Bottom Cell Culture Dishes / Plates



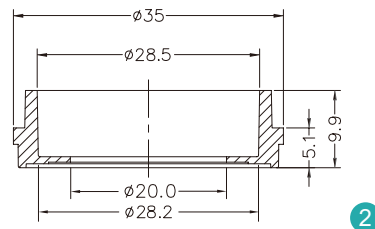
NEST glass bottom series are applied in confocal microscope, high resolution microscope, differential interference contrast microscope, polarized light microscope and phase contrast microscope for cell observation.

Features

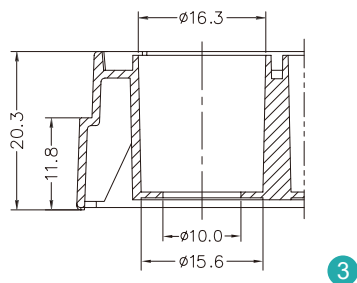
- Can be used for live cell observation.
- Special bottom design for easy grip.
- Round cover glass insert for good appearance.
- Medical adhesive glue to guarantee non-cytotoxicity.
- Sterilized by E-beam, SAL=10⁻⁶.
- Made of high clarity, 100% virgin polystyrene and high clarity glass as bottoms.
- High quality cover glass of standard thickness.



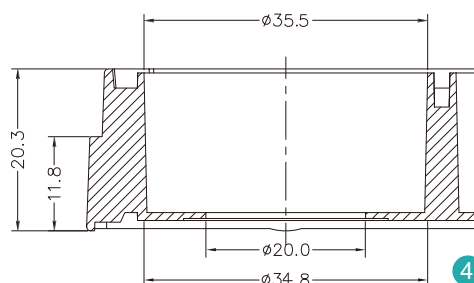
1



2



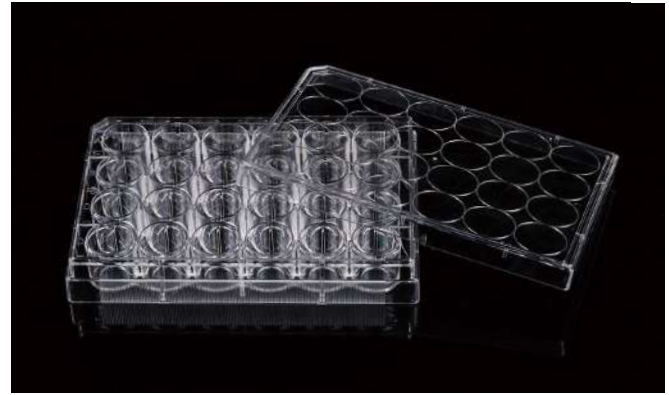
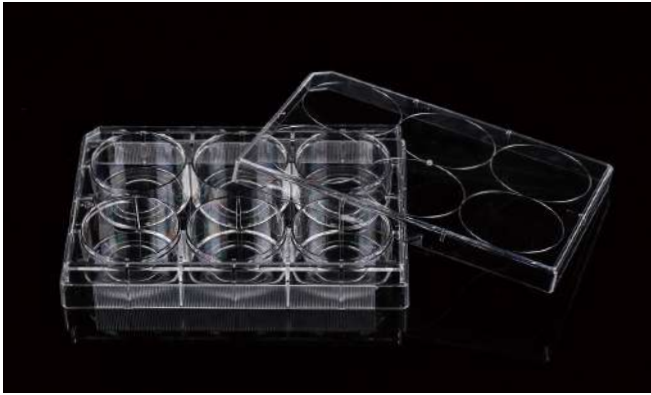
3



4

Unit: mm

- 1 Φ15 Glass Bottom Dish
- 2 Φ20 Glass Bottom Dish
- 3 24 Well Glass Bottom Plate
- 4 6 Well Glass Bottom Plate



Glass Bottom Culture Dishes

Cat.No.	Type (mm)	Glass Diameter (mm)	Cultivation Area (cm ²)	TC	/Pack	/Case
801002	35	15	6.2	Yes	10	200
801001	35	20	6.2	Yes	10	200



Glass Bottom Culture Plates

Cat.No.	Spec (Well)	Glass Diameter (mm)	Cultivation Area (cm ²)	TC	/Pack	/Case
801004	6	34.8	9.5	Yes	1	10
801006	24	15.6	1.9	Yes	1	10



Cover Glass

Features

- High quality glass, non-cytotoxic
- Sterile, non-treated
- Manufactured in 100,000 grade clean room
- Resistant to organic solvent
- Autoclavable
- Can be used in confocal experiment

Cat.No.	Glass Diameter (mm)	Thickness (mm)	/Pack	Application
801010	14	0.17	100	24 Well Cell Culture Plate
801007	15	0.17	100	24 Well Cell Culture Plate
801011	18	0.17	100	12 Well Cell Culture Plate
801008	20	0.17	100	12 Well Cell Culture Plate
801009	25	0.17	100	6 Well Cell Culture Plate